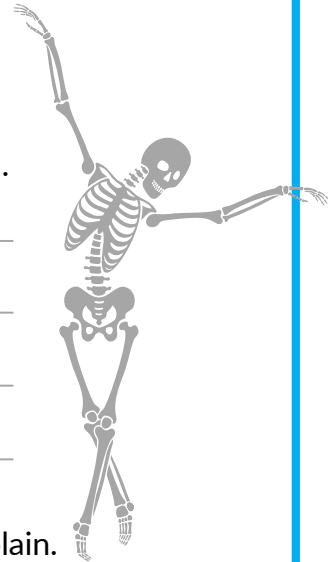


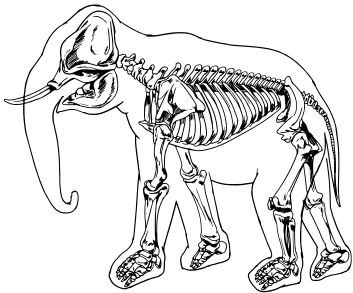


Skeletons!

1. In humans, what important functions do bones fulfill? List as many as you can.



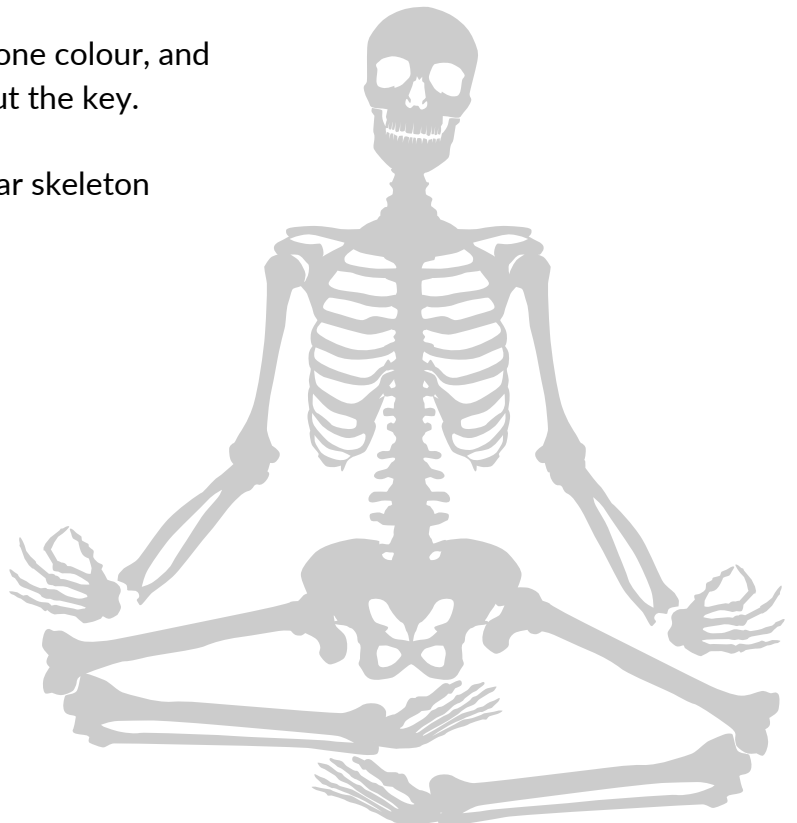
2. Do you think skeletons perform the same functions in other vertebrates? Explain.



3. Shade the bones of the axial skeleton in one colour, and the appendicular skeleton in another. Fill out the key.

- Axial skeleton Appendicular skeleton
- Bones I have broken

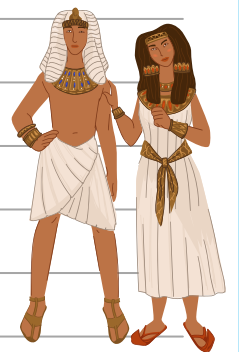
4. What have you done this week to take care of your bones? Do you think it's enough?



5. If something goes wrong with a bone, you can sometimes have a prosthetic—or artificial—bone put in. About 3,000 years ago, ancient Egyptians developed the first prosthetic bone. Look at the image below, showing typical Egyptian footwear. For which bone do you think the prosthesis was? Explain.



Inside the tomb of King Tutankhamun were 80 pairs of sandals, including these! (Image: Mary Harrsch / CC BY-NC-SA 2.0)



6. Of all the bones in the skeleton, which do you think is the most important? Why?

7. Why do you think skeletons have such a strong association with Halloween?

